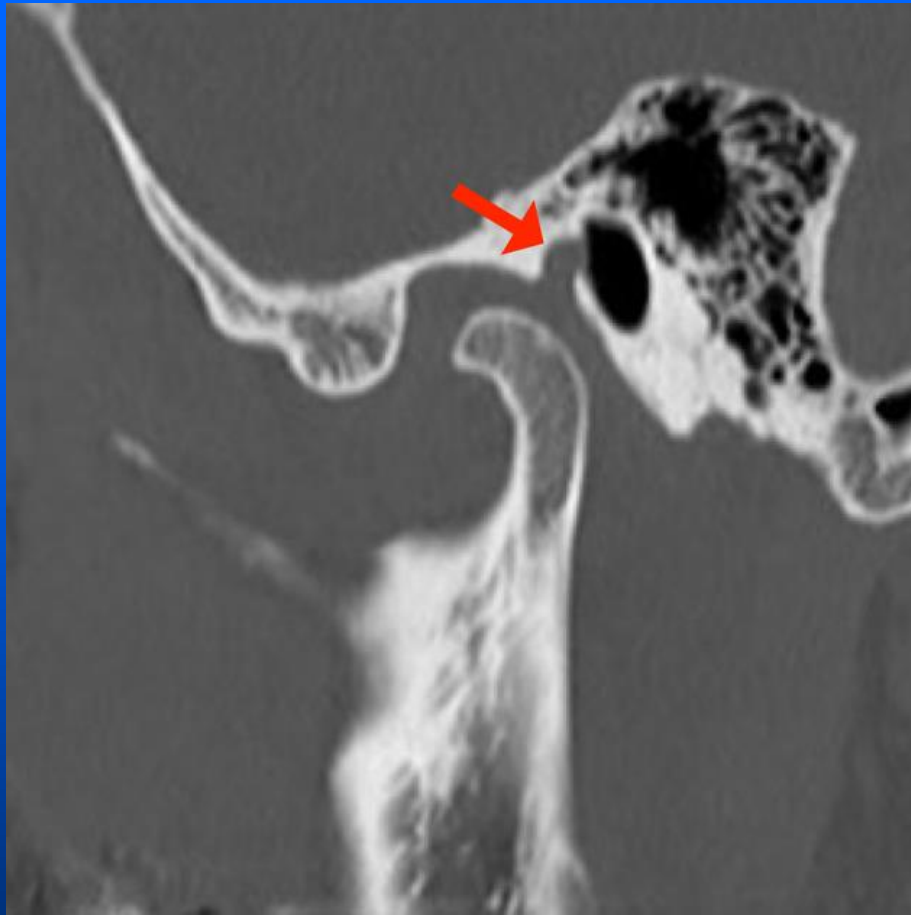


# Persistent foramen tympanicum

- Huschke foramen, anatomic variant
- Anterior wall of the external auditory canal (EAC), posteromedial to the temporomandibular joint (TMJ).
- Foramen is a misnomer, because the bony defect does not contain any neurovascular structures.
- Usually closes before the age of 5 but
  - Can persist into adulthood in about 15% of people
  - Majority (63%) are unilaterally.
- Usually asymptomatic,
- Can be associated with various pathology
  - **herniation of TMJ tissue** or salivary gland tissue into the EAC,
  - dissemination of external otitis, or extension of tumors or metastases.



Anterior wall of the external auditory canal, posteromedial to the (TMJ)



# Cyst From OA

